

THE DAHLE ADVANTAGE



DAHLE SHREDDERS STANDARD FEATURES

- 1 **All Steel Frame:** Keeps the cutting cylinders in perfect alignment for optimal performance.
- 2 **Solid Cutting Head:** A solid block of German Solingen Steel is milled to create each cutting cylinder.
- 3 **Door Open Interlock:** Prevents the shredder from operating with the door open. This safety feature is found on all models.
- 4 **Thermally Protected Motor:** Thermal protection prevents damage to the motor from overheating.
- 5 **Rubber Shock Mounts:** Barrier between the cutting head and cabinet. They isolate noise and reduce vibration making Dahle shredders some of the quietest on the market.
- 6 **Shred Bag:** Features gusseted sides to expand to the maximum capacity of your shredder cabinet.
- 7 **Wooden Cabinet w/Swivel Casters:** Attractive cabinet helps reduce noise and blend in with any decor. Swivel casters allow for easy movability.
- 8 **SmartPower:** Energy management system that reduces power consumption when sitting idle, and eliminates power use after 30 minutes of inactivity.
- 9 **Chain Driven:** Provides slip-free power to the cutting mechanism for maximum throughput.

**Some components not available on certain models.*

DAHLE CLEANTEC® SPECIAL FEATURES

- 10 **Dust Filtration:** Eliminates up to 98% of the shredders fine dust particles and provides a cleaner, healthier work environment.
- 11 **Safe Technology:** Revolutionary Verbal and Contact Emergency Shutdown System - Simply yell "Stop" or hit the top cover and the shredder immediately stops.
- 12 **ESP Protection:** The shredder "Knows" how much you're shredding and will not operate if sheet capacity is exceeded.
- 13 **EvenFlow Lubricator:** This automatic oiler provides slow, continuous lubrication across the entire cutting mechanism to ensure peak performance.



TOP SECRET



The easiest and most effective way to protect government information is to shred it with a Dahle high security paper shredder, for your secure document destruction of your Protected A, B, C, Secret, Top Secret and COMSEC information.



SMALL OFFICE

OFFICE

DEPARTMENT

HIGH CAPACITY

Type II (Level 6) / Type II / Type IIIA / Type IIIB / RCMP Security Equipment Guide listed Machines





CANADIAN GOVERNMENT STANDARDS

Federal Government approved paper shredders

Approved destruction equipment and processes are limited to specified media and security classifications and are listed in the Security Equipment Guide (SEG). The SEG is available to government departments only and can be found on the internet at: http://www.rcmp-grc.gc.ca/physec-secmat/res-lim/pubs/seg/html/home_e.htm

Types of Paper Shredders:

Type II (level 6) - A special sub-category reserved for NSA (USA) approved high security paper shredders. These are recommended for cases where a TRA recommends a higher degree of security (eg: embassies, overseas deployments, smaller than 12 point text size).

Type II - A shredder approved for the secure destruction of Secret, Top Secret and Protected C information written on paper or other text based media. Type II destruction equipment have been assessed as capable of reducing information classified Secret, Top Secret and Protected C or lower to a size that, under the threat and risk conditions existing in urban Canada and with known reconstruction methodology, is deemed safe to dispose of or recycle as unclassified waste.

Type III - a shredder approved for the secure destruction of Confidential and Protected B (subject to a TRA) information written on paper or other text based media. Type III destruction equipment is capable of reducing information classified Confidential and Protected B or lower to a size that, under the threat and risk conditions existing in urban Canada and with known reconstruction methodology, is deemed safe to dispose of or recycle as unclassified waste.

Type IIIA and Type IIIB - Sub-categories of Type III for office shredders. Type IIIA is for regular use and Type IIIB is for the destruction of information in bulk (only).

Only equipment that is submitted for testing and meets all requirements of the RCMP standard DNI (2005) is listed in the SEG. Such requirements include electrical safety certification, sound levels to the Canadian Occupational Health and Safety requirements and standardized throughput rate categorization. SEG listed equipment must be supported by an authorized Canadian distributor providing complete repair and maintenance services.

Classification	Type	Shred Size Maximum	Disintegrator Screen Size	Comments	
Protected B (where a TRA recommends the use of approved equipment)	General Office Use	IIIA	2mm x 15mm	10mm	Type IIIB equipment is approved for bulk destruction only and must not be used for periodic destruction
	Bulk Destruction	IIIB	6mm x 50mm	13mm	
Protected C	General Office Use	II	1mm x 14.3mm	6mm	Select Type II (level 6) equipment where a TRA recommends
Confidential	General Office Use	IIIA	2mm x 15mm	10mm	Type IIIB equipment is approved for bulk destruction only and must not be used for periodic destruction
	Bulk Destruction	IIIB	6mm x 50mm	13mm	
Secret & Top Secret	General Office Use	Type II	1mm x 14.3mm	6mm	Select Type II (level 6) equipment where a TRA recommends

(extract from the RCMP SEG - Destruction Equipment Selection, Section 2)

WHY DAHLE?

For over 80 years Dahle has established a reputation for developing safe, innovative products that exceed the demands of its customers. Founded in 1930, Wilhelm Dahle first began producing steel cutting discs for pencil sharpeners. Throughout the years Dahle's reputation and customer satisfaction has grown worldwide.

In addition to a well established past, Dahle continues to forge the future of document shredding. The DAHLE CleanTEC® shredders are a dramatic accomplishment of innovative design, safety, and special features never seen before on a paper shredder. Features like Fine Dust Filtration, Safe Technology, and Electronic Sensing Protection (ESP) continue to keep us one step ahead of the competition - and are the reason why Dahle remains the preferred choice among professionals.

DAHLE Professional Type II (Level 6)

Dahle Type II (Level 6) paper shredders exceeds the security and performance standard of the RCMP Destruction Standard and are recommended for a higher degree of security. Our Type II (Level 6) models have been further endorsed by the U.S. National Security Agency to reduce an 216mm x 279mm (8 1/2" x 11") piece of paper into 16,000 particles 1mm x 4.7mm in size (NSA/CSS Specification 02-01) and it is impossible to reassemble any document you shred with these machines.

20434 DXC Deployment Shredder



- 1mm x 4.7mm Shred Size - Security Type II (Level 6)
- 240mm (9 1/2") Feed Width
- 4 / 6 Sheet Capacity
- Speed - 4 m/min (13 ft/min)
- Motor 375 Watts (1/2 hp)
- Dimensions (H x W x D) 457 x 406 x 356 mm (18" x 16" x 14")
- Solid Steel cutting head
- Slide out drawer to remove waste
- Mobility case made of hard plastic and lined with foam for protection
- Lockable case is airtight, watertight, and corrosion proof
- Rolling casters and pull strap included and removable for transport

20434 Small Office Shredder



- 1mm x 4.7mm Shred Size - Security Type II (Level 6)
- 240mm (9 1/2") Feed Width
- 4 / 6 Sheet Capacity
- Speed - 4 m/min (13 ft/min)
- Motor 375 Watts (1/2 hp)
- 40 L waste volume (10 Gallons)
- Dimensions (H x W x D) 635 x 406 x 356 mm (25" x 16" x 14")
- Automatic on/off
- Chain driven providing slip free power

20634 EC Office Shredder



- 1mm x 4.7mm Shred Size - Security Type II (Level 6)
- 260mm (10 1/4") Feed Width
- 6 / 8 Sheet Capacity
- Speed - 8 m/min (26 ft/min)
- Whisper quiet 746 watts (1hp motor)
- 64 L waste volume (16 Gallons)
- Dimensions (H x W x D) 763 x 426 x 394 mm (30 1/2" x 16 3/4" x 15 1/4")
- Fully electronic operation
- Chain driven providing slip free power
- Single tier work rack included

30434 Small Department Shredder



- 1mm x 4.7mm Shred Size - Type II (Level 6)
- 310mm (12") Feed Width
- 7 / 9 Sheet Capacity
- Speed - 9.15 m/min (30 ft/min)
- 140 L waste volume (35 Gallons)
- Dimensions (H x W x D) 890 x 527 x 489 mm (35" x 20 3/4" x 19 1/4")
- Fully electronic operation
- Chain driven providing slip free power
- Powerful 900 watts (1 1/4 Hp) continuous duty motor

20834 EC Department Shredder



- 1mm x 4.7mm Shred Size - Type II (Level 6)
- 405mm (16") Feed Width
- 8 / 10 Sheet Capacity
- Speed - 10.7 m/min (35 ft/min)
- Motor 1500 watts (2 Hp) continuous duty
- 140 L waste volume (35 Gallons)
- Dimensions (H x W x D) 851 x 648 x 432 mm (33 1/2" x 25 1/2" x 17")
- Fully electronic operation
- Chain driven providing slip free power
- Single tier work rack included
- Standard 15 AMP outlet

20835 EC Department Shredder



- 1mm x 4.7mm Shred Size - Type II (Level 6)
- 405mm (16") Feed Width
- 5 / 7 Sheet Capacity
- Speed - 6.1 m/min (20 ft/min)
- Motor 746 watts (1 Hp) continuous duty
- 140 L waste volume (35 Gallons)
- Dimensions (H x W x D) 851 x 648 x 432 mm (33 1/2" x 25 1/2" x 17")
- Fully electronic operation
- Chain driven providing slip free power
- Single tier work rack included
- Standard 15 AMP outlet

20394 High Capacity Shredder



- 1mm x 4.7mm Shred Size - Type II (Level 6)
- 405mm (16") Feed Width
- 9 / 11 Sheet Capacity
- Speed - 10.7 m/min (35 ft/min)
- Motor 1500 watts (2 hp)
- 200 L waste volume (50 Gallons)
- Dimensions (H x W x D) 1181 x 699 x 610 mm (46 1/2" x 27 1/2" x 24")
- Chain driven providing slip free power
- Fully automatic
- Standard 15 AMP outlet

DAHLE Type II (Level 6) CleanTEC

In order to destroy information in national interest, our military and government departments require higher levels of security from the paper shredders. As a solution, Dahle offers DAHLE CleanTEC® high security Type II (Level 6) shredders that produce a 1mm x 4.7mm shred size (NSA/CSS Specification 02-01) Top Secret and COMSEC information. The DAHLE CleanTEC® advantage is an intelligently designed shredder that provides air filtration (traps up to 98% of fine dust particles), highly advanced safety features, ESP protection, and integrated automatic oiler along with added benefits such as Dahle's SmartPower Energy Management System.

41334 Small Office Shredder



- 1mm x 4.7mm Shred Size - Type II (Level 6)
- 260mm (10 1/4") Feed Width
- 5/6 Sheet Capacity
- Motor: 648 Watts (.87hp)
- 92 L waste volume (23 Gallon)
- Dimensions (H x W x D) 864 x 540 x 432 mm (34-1/4" x 21-1/2" x 17-1/8")
- DAHLE CleanTEC® Filtration
- Safe Technology & SmartPower Management
- Integrated Auto Oiler

41434 Office Shredder



- 1mm x 4.7mm Shred Size - Type II (Level 6)
- 260mm (10 1/4") Feed Width
- 8/10 Sheet Capacity
- Motor: 900 Watts (1.2hp)
- 120 L waste volume (30 Gallon)
- Dimensions (H x W x D) 914 x 533 x 432 mm (36-3/4" x 21-1/2" x 17-1/2")
- DAHLE CleanTEC® Filtration
- Safe Technology & SmartPower Management
- Integrated Auto Oiler

41534 Small Department Shredder



- 1mm x 4.7mm Shred Size - Type II (Level 6)
- 310mm (12") Feed Width
- 8/10 Sheet Capacity
- Motor: 900 Watts (1.2hp)
- 152 L waste volume (38 Gallon)
- Dimensions (H x W x D) 876 x 737 x 508 mm (34-1/2" x 29" x 20")
- DAHLE CleanTEC® Filtration
- Safe Technology & SmartPower Management
- Integrated Auto Oiler
- Standard 15 AMP outlet

41634 Department Shredder



- 1mm x 4.7mm Shred Size - Type II (Level 6)
- 405mm (16") Feed Width
- 9/11 Sheet Capacity
- Motor: 1640 Watts (2.2hp)
- 180 L waste volume (45 Gallon)
- Dimensions (H x W x D) 965 x 737 x 508 mm (38" x 29" x 20")
- DAHLE CleanTEC® Filtration
- Safe Technology & SmartPower Management
- Integrated Auto Oiler
- Standard 15 AMP outlet

DAHLE Professional Type II

Dahle Type II paper shredders are approved for the secure destruction of Secret, Top Secret and Protected C information written on paper or other text based media. Proficiency best describes Dahle shredders with their ability to get the job done quickly and easily with minimal effort. Dahle is the best line of defense in preventing unauthorized access and to destroy confidential information.

20430 Small Office Shredder



- 0.8mm x 12mm (1/32" x 7/16") Shred Size - Type II
- 240mm (9 1/2") Feed Width
- 5 / 6 Sheet Capacity
- Speed - 4 m/min (13 ft/min)
- Motor 375 watts (1/2 hp)
- 40 L waste volume (10 Gallons)
- Dimensions (H x W x D) 640 x 410 x 300 mm (25" x 16" x 14")
- Chain driven providing slip free power
- Automatic On/Off

20630 EC Office Shredder



- 0.8mm x 12mm (1/32" x 7/16") Shred Size - Type II
- 260mm (10 1/4") Feed Width
- 7 / 9 Sheet Capacity
- Speed - 8 m/min (26 ft/min)
- Motor 746 watts (1 Hp)
- 64 L waste volume (16 Gallons)
- Dimensions (H x W x D) 780 x 430 x 390 mm (30 1/2" x 16 3/4" x 15 1/4")
- Fully electronic operation
- Chain driven providing slip free power
- Auto reverse in the event of an overfeed

30430 Small Department Shredder



- 0.8mm x 12mm (1/32" x 7/16") Shred Size - Type II
- 310mm (12") Feed Width
- 7 / 9 Sheet Capacity
- Speed - 5 m/min (16 ft/min)
- Motor 900 watts (1 1/4 Hp)
- 140 L waste volume (35 Gallons)
- Dimensions (H x W x D) 890 x 527 x 489 mm (35" x 20 3/4" x 19 1/4")
- Fully electronic operation
- Chain driven providing slip free power

20831 EC Department Shredder



- 0.8mm x 12mm (1/32" x 7/16") Shred Size - Type II
- 405mm (16") Feed Width
- 13 / 15 Sheet Capacity
- Speed - 4.6 m/min (15 ft/min)
- Motor 1500 watts (2 Hp)
- 140 L waste volume (35 Gallons)
- Dimensions (H x W x D) 851 x 648 x 432 mm (33 1/2" x 25 1/2" x 17")
- Fully electronic operation
- Chain driven providing slip free power
- Standard 15 AMP outlet

DAHLE Professional Type II - Continued

40330 Small Office Shredder



- 0.8mm x 12mm (1/32" x 7/16") Shred Size - Type II
- 260mm (10 1/4") Feed Width
- 6/8 Sheet Capacity
- Motor: 648 Watts (.87hp)
- 92 L waste volume (23 Gallon)
- Dimensions (H x W x D) 864 x 540 x 432 mm (34-1/4" x 21-1/2" x 17-1/8")
- SmartPower Management
- Integrated Auto Oiler

40430 Office Shredder



- 0.8mm x 12mm (1/32" x 7/16") Shred Size - Type II
- 260mm (10 1/4") Feed Width
- 9/11 Sheet Capacity
- Motor: 900 Watts (1.2hp)
- 120 L waste volume (30 Gallon)
- Dimensions (H x W x D) 914 x 533 x 432 mm (36-3/4" x 21-1/2" x 17-1/2")
- SmartPower Management
- Integrated Auto Oiler

40530 Small Department Shredder



- 0.8mm x 12mm (1/32" x 7/16") Shred Size - Type II
- 310mm (12") Feed Width
- 10/12 Sheet Capacity
- Motor: 900 Watts (1.2hp)
- 152 L waste volume (38 Gallon)
- Dimensions (H x W x D) 876 x 737 x 508 mm (34-1/2" x 29" x 20")
- SmartPower Management
- Integrated Auto Oiler
- Standard 15 AMP outlet

40630 Department Shredder



- 0.8mm x 12mm (1/32" x 7/16") Shred Size - Type II
- 405mm (16") Feed Width
- 11/13 Sheet Capacity
- Motor: 1640 Watts (2.2hp)
- 180 L waste volume (45 Gallon)
- Dimensions (H x W x D) 965 x 737 x 508 mm (38" x 29" x 20")
- SmartPower Management
- Integrated Auto Oiler
- Standard 15 AMP outlet

DAHLE Type II CleanTEC

In order to destroy Secret, Top Secret and Protected C information to RCMP standards of Type II with a particle size of 0.8mm x 12mm try a new DAHLE CleanTEC® high security shredder. DAHLE CleanTEC® advantages are a intelligently designed shredder that provides air filtration (traps up to 98% of fine dust particles), highly advanced safety features, ESP protection, and integrated automatic oiler plus Dahle's SmartPower Energy Management System.

41330 Small Office Shredder



- 0.8mm x 12mm (1/32" x 7/16") Shred Size - Type II
- 260mm (10 1/4") Feed Width
- 6/8 Sheet Capacity
- Motor: 648 Watts (.87hp)
- 92 L waste volume (23 Gallon)
- Dimensions (H x W x D) 864 x 540 x 432 mm (34-1/4" x 21-1/2" x 17-1/8")
- DAHLE CleanTEC® Filtration
- Safe Technology & SmartPower Management
- Integrated Auto Oiler

41430 Office Shredder



- 0.8mm x 12mm (1/32" x 7/16") Shred Size - Type II
- 260mm (10 1/4") Feed Width
- 9/11 Sheet Capacity
- Motor: 900 Watts (1.2hp)
- 120 L waste volume (30 Gallon)
- Dimensions (H x W x D) 914 x 533 x 432 mm (36-3/4" x 21-1/2" x 17-1/2")
- DAHLE CleanTEC® Filtration
- Safe Technology & SmartPower Management
- Integrated Auto Oiler

41530 Small Department Shredder



- 0.8mm x 12mm (1/32" x 7/16") Shred Size - Type II
- 310mm (12") Feed Width
- 10/12 Sheet Capacity
- Motor: 900 Watts (1.2hp)
- 152 L waste volume (38 Gallon)
- Dimensions (H x W x D) 876 x 737 x 508 mm (34-1/2" x 29" x 20")
- DAHLE CleanTEC® Filtration
- Safe Technology & SmartPower Management
- Integrated Auto Oiler
- Standard 15 AMP outlet

41630 Department Shredder



- 0.8mm x 12mm (1/32" x 7/16") Shred Size - Type II
- 405mm (16") Feed Width
- 11/13 Sheet Capacity
- Motor: 1640 Watts (2.2hp)
- 180 L waste volume (45 Gallon)
- Dimensions (H x W x D) 965 x 737 x 508 mm (38" x 29" x 20")
- DAHLE CleanTEC® Filtration
- Safe Technology & SmartPower Management
- Integrated Auto Oiler
- Standard 15 AMP outlet

DAHLE Type IIIA CleanTEC

41322 Small Office Shredder



- 2mm x 15mm (1/12" x 9/16") Shred Size - Type IIIA Paper
- 260mm (10 1/4") Feed Width
- 9/11 Sheet Capacity
- Motor: 648 Watts (.87hp)
- 92 L waste volume (23 Gallon)
- Dimensions (H x W x D) 864 x 540 x 432 mm (34-1/4" x 21-1/2" x 17-1/8")
- DAHLE CleanTEC® Filtration
- Safe Technology & SmartPower Management
- Integrated Auto Oiler
- Will shred paper clips, staples, credit cards

41422 Office Shredder



- 2mm x 15mm (1/12" x 9/16") Shred Size - Type IIIA Paper
- 260mm (10 1/4") Feed Width
- 12/14 Sheet Capacity
- Motor: 900 Watts (1.2hp)
- 120 L waste volume (30 Gallon)
- Dimensions (H x W x D) 914 x 533 x 432 mm (36-3/4" x 21-1/2" x 17-1/2")
- DAHLE CleanTEC® Filtration
- Safe Technology & SmartPower Management
- Integrated Auto Oiler
- Will shred paper clips, staples, credit cards, Cd's and Dvd's

41522 Small Department Shredder



- 2mm x 15mm (1/12" x 9/16") Shred Size - Type IIIA
- 310mm (12") Feed Width
- 11/13 Sheet Capacity
- Motor: 900 Watts (1.2hp)
- 152 L waste volume (38 Gallon)
- Dimensions (H x W x D) 876 x 737 x 508mm (34-1/2" x 29" x 20")
- DAHLE CleanTEC® Filtration
- Safe Technology & SmartPower Management
- Integrated Auto Oiler
- Will shred paper clips, staples, credit cards, Cd's and Dvd's

41622 Department Shredder



- 2mm x 15mm (1/12" x 9/16") Shred Size - Type IIIA
- 405mm (16") Feed Width
- 15/19 Sheet Capacity
- Motor: 1640 Watts (2.2hp)
- 180 L waste volume (45 Gallon)
- Dimensions (H x W x D) 965 x 737 x 508mm (38" x 29" x 20")
- DAHLE CleanTEC® Filtration
- Safe Technology & SmartPower Management
- Integrated Auto Oiler
- Will shred paper clips, staples, credit cards, Cd's and Dvd's
- Standard 15 AMP outlet

DAHLE Professional Type IIIA

20612 EC Office Shredder



- 2mm x 15mm (1/12" x 9/16") Cross Cut - Security Type IIIA
- 260mm (10 1/4") Feed Width
- 14 / 17 Sheet Capacity
- Media - Paper: Protected A&B / cd's & dvd's: Top Secret
- Speed - 8 m/min (26 ft/min)
- Motor 746 watts (1 Hp)
- 64 L waste volume (16 Gallons)
- Dimensions (H x W x D) 780 x 430 x 390 mm (30 1/2" x 16 3/4" x 15 1/4")
- Fully electronic operation
- Chain driven providing slip free power
- Auto reverse in the event of an overfeed
- Will shred paper clips and staples and cd's (special insert included)

20392 High Capacity Shredder



- 2mm x 15mm (1/12" x 9/16") Cross Cut - Security Type IIIA
- 405mm (16") Feed Width
- 25 / 30 Sheet Capacity
- Speed - 10.7 m/min (35 ft/min)
- Motor 1500 watts (2 hp)
- 200 L waste volume (50 Gallons)
- Dimensions (H x W x D) 1181 x 699 x 610 mm (46 1/2" x 27 1/2" x 24")
- Chain driven providing slip free power
- Fully automatic
- Standard 15 AMP outlet

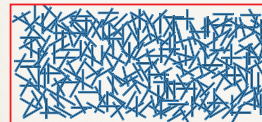
Shred Samples



Shred Sample Size - 1mm x 4.7mm Cross Cut Type II (Level 6)



Shred Sample Size - 2mm x 15mm (1/12" x 9/16") Cross Cut Type IIIA



Shred Sample Size - 0.8mm x 12mm (1/32" x 7/16") Cross Cut Type II



Shred Sample Size - 3.9mm x 40mm (1/8" x 1 9/16") Cross Cut Type IIIB

DAHLE Shredder Accessories

Dahle Shredder Supplies & Accessories are specifically designed for Dahle shredders. By using the following products you are guaranteed to achieve optimal performance and greatly prolong the life of your shredder.

Filter



The DAHLE CleanTEC® is the World's only shredder with a fine dust filtration system. This integrated system collects fine dust particles created around the cutting cylinders, and forces them into a specialized filter on the back of each machine. This CleanTEC® filter permanently traps up to 98% of the fine dust, and provides a cleaner, healthier work environment.

Item Number	For Shredder Models	Quantity
20710	All DAHLE CleanTEC Shredders	1/box

Shred Bags



Specifically designed to fit your Dahle shredder, these 1.5mm thick shred bags feature gusseted sides to allow for greater volume of waste material.

Item Number	For Professional Shredder Models	Quantity
701	All Personal & 20300 Series	100/box
704	20400, 20500, & 20600 Series	100/box
705	All Multi+Media & Department	100/box
706	All High Capacity Shredders	100/box

Item Number	For CleanTEC Models	Quantity
704	For DAHLE CleanTEC® 412xx Series Shredders	100/Box
705	For DAHLE CleanTEC® 413xx & 414xx Series Shredder	100/Box
706	For DAHLE CleanTEC® 415xx & 416xx Series Shredders	100/Box

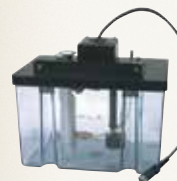
Shred Box



Easy to empty shred box can be lined with our disposable shred bags for added convenience in emptying your shredded material.

Item Number	For Professional Shredder Models	Quantity
20750	20300 Series	1 box
20749	20400 Series	1 box
20748	20500 & 20600 Series	1 box
20747	20800 Series	1 box
20739	20390 Series	1 box

Automatic Oilers



Don't risk damage to your shredder's cutting system by running it without proper lubrication. Dahle's automatic lubricating systems offer the most efficient oil delivery system on the market. Easily mounted on the side of your shredder, these units protect your shredder by constantly providing the proper amount of lubrication.

Item Number	For Shredder Models	Oil Capacity
SAO-110	For use in 20 series shredders	1.5 liters
SAO-120	For use in 20 series shredders	4 liters

Shredder Oil



Formulated for Dahle shredders, this oil offers high cling value and low dust retention. Proper oiling guidelines for your Dahle shredder and an MSDS is provided for your convenience.

Item Number	For Shredder Models	Quantity
20740	For use in all shredders	6 - 355 ml bottles
20741	For use with automatic oilers	4 - 3.78 L bottles