

Type II (Level 6) / Type II / Type IIIA / Type IIIB / RCMP Security Equipment Guide listed Machines



The easiest and most effective way to protect government information is to shred it with a Dahle high security paper shredder, for secure document destruction of your Protected A, B, C, Secret, Top Secret and COMSEC information.



SMALL OFFICE



OFFICE



DEPARTMENT



HIGH CAPACITY

Federal Government approved paper shredders

Approved destruction equipment and processes are limited to specified media and security classifications and are listed in the Security Equipment Guide (SEG). The SEG is available to government departments only and can be found on the internet at: http://www.rcmp-grc.gc.ca/physec-secmat/res-lim/pubs/seg/html/home_e.htm

Types of Paper Shredders

Type II (Level 6) - A special sub-category reserved for NSA (USA) approved high security paper shredders. These are recommended for cases where a TRA recommends a higher degree of security (eg: embassies, overseas deployments, smaller than 12 point text size).

Type II - A shredder approved for the secure destruction of Secret, Top Secret and Protected C information written on paper or other text based media. Type II destruction equipment have been assessed as capable of reducing information classified Secret, Top Secret and Protected C or lower to a size that, under the threat and risk conditions existing in urban Canada and with known reconstruction methodology, is deemed safe to dispose of or recycle as unclassified waste.

Type III - a shredder approved for the secure destruction of Confidential and Protected B (subject to a TRA) information written on paper or other text based media. Type III destruction equipment is capable of reducing information classified Confidential and Protected B or lower to a size that, under the threat and risk conditions existing in urban Canada and with known reconstruction methodology, is deemed safe to dispose of or recycle as unclassified waste.

Type IIIA and Type IIIB - Sub-categories of Type III for office shredders. Type IIIA is for regular use and Type IIIB is for the destruction of information in bulk (only).

Only equipment that is submitted for testing and meets all requirements of the RCMP standard DNI (2005) is listed in the SEG. Such requirements include electrical safety certification, sound levels to the Canadian Occupational Health and Safety requirements and standardized throughput rate categorization. SEG listed equipment must be supported by an authorized Canadian distributor providing complete repair and maintenance services.

Classification		Type	Shred Size Maximum	Disintegrator Screen Size	Comments
Protected B (where a TRA recommends the use of approved equipment)	General Office Use	IIIA	2mm x 15mm	10mm	Type IIIB equipment is approved for bulk destruction only and must not be used for periodic destruction
	Bulk Destruction	IIIB	6mm x 50mm	13mm	
Protected C	General Office Use	II	1mm x 14.3mm	6mm	Select Type II (Level 6) equipment where a TRA recommends
Confidential	General Office Use	IIIA	2mm x 15mm	10mm	Type IIIB equipment is approved for bulk destruction only and must not be used for periodic destruction
	Bulk Destruction	IIIB	6mm x 50mm	13mm	
Secret & Top Secret	General Office Use	Type II	1mm x 14.3mm	6mm	Select Type II (Level 6) equipment where a TRA recommends

(extract from the RCMP SEG - Destruction Equipment Selection, Section 2)



DAHLE Professional Type II (Level 6)

Dahle Type II (Level 6) paper shredders exceed the security and performance standard of the RCMP Destruction Standard and are recommended for a higher degree of security. In order to destroy highly sensitive information of national interest, our military and government departments require higher levels of security from the paper shredders. The Type II (Level 6) models have been further endorsed by the U.S. National Security Agency to reduce an 216mm x 279mm (8 ½" x 11") piece of paper into 16,000 particles 1mm x 4.7mm in size (NSA/CSS Specification 02-01) and it is impossible to reassemble any document you shred with these machines.

40334 Small Office Shredder



- Shred Size: 1 mm x 4.7 mm - Type II, (Level 6)
- Feed Width: 260mm (10 ¼")
- Sheet Capacity: 6/8
- Motor: 648 Watts (.87hp)
- Waste Volume: 92 L / 23 Gallons
- Dimensions, mm: 864 H x 540 W x 432 D
- Dimensions, inches: 34¼ H x 21½ W x 17½ D
- SmartPower Management
- Integrated Auto Oiler

40434 Office Shredder



- Shred Size: 1mm x 4.7mm - Type II (Level 6)
- Feed Width: 260mm (10¼")
- Sheet Capacity: 8/10
- Motor: 900 Watts (1.2hp)
- Waste Volume: 120 L / 30 Gallons
- Dimensions, mm: 914 H x 533 W x 432 D
- Dimensions, inches: 36¼ H x 21½ W x 17½ D
- SmartPower Management
- Integrated Auto Oiler

40534 Department Shredder



- Shred Size: 1mm x 4.7mm - Type II (Level 6)
- Feed Width: 310mm (12")
- Sheet Capacity: 8/10
- Motor: 900 Watts (1.2hp)
- Waste Volume: 152 L / 38 Gallons
- Dimensions, mm: 876 H x 737 W x 508 D
- Dimensions, inches: 34½ H x 29 W x 20 D
- Integrated Auto Oiler

20394 High Capacity Shredder



- Shred Size: 1mm x 4.7mm - Type II (Level 6)
- Feed Width: 405mm (16")
- Sheet Capacity: 9 / 11
- Speed: 10.7 m/min (35 ft/min)
- Motor: 1500 watts (2 hp)
- Dimensions, mm: 1181 H x 699 W x 610 D
- Dimensions, inches: 46½ H x 27½ W x 24 D
- Waste Volume: 200 L / 50 Gallons
- Chain driven providing slip free power
- Fully automatic

DAHLE CleanTEC® Type II (Level 6)

The DAHLE CleanTEC® advantage is an intelligently designed shredder that provides air filtration (traps up to 98% of fine dust particles), highly advanced safety features, ESP protection, and integrated automatic oiler along with added benefits such as Dahle's SmartPower Energy Management System.

41334 Small Office Shredder



- Shred Size: 1mm x 4.7mm - Type II (Level 6)
- Feed Width: 260mm (10¼")
- Sheet Capacity: 5/6
- Motor: 648 Watts (.87hp)
- Waste Volume: 92 L / 23 Gallons
- Dimensions, mm: 864 H x 540 W x 432 D
- Dimensions, inches: 34¼ H x 21½ W x 17½ D
- DAHLE CleanTEC® Filtration
- Safe Technology & SmartPower Management
- Integrated Auto Oiler

41434 Office Shredder



- Shred Size: 1mm x 4.7mm - Type II (Level 6)
- Feed Width: 260mm (10¼")
- Sheet Capacity: 8/10
- Motor: 900 Watts (1.2hp)
- Waste Volume: 120 L / 30 Gallons
- Dimensions, mm: 914 H x 533 W x 432 D
- Dimensions, inches: 36¼ H x 21½ W x 17½ D
- DAHLE CleanTEC® Filtration
- Safe Technology & SmartPower Management
- Integrated Auto Oiler

41534 Small Department Shredder



- Shred Size: 1mm x 4.7mm - Type II (Level 6)
- Feed Width: 310mm (12")
- Sheet Capacity: 8/10
- Motor: 900 Watts (1.2hp)
- Waste Volume: 152 L / 38 Gallons
- Dimensions, mm: 876 H x 737 W x 508 D
- Dimensions, inches: 34½ H x 29 W x 20 D
- DAHLE CleanTEC® Filtration
- Safe Technology & SmartPower Management
- Integrated Auto Oiler



DAHLE Deployment Shredder Type II (Level 6)

Do you need a portable shredder to destroy Top Secret documents in the field? Dahle's Deployment Shredder exceeds the RCMP Destruction Standard and is easily transported. The shredder itself features two solid steel cutting cylinders that will reduce paper to a 1mm x 4.7mm particle size. A wooden cabinet and recessed handles make this machine durable and easy to lift. The sliding drawer catches the shredded waste and allows for easy disposal. Inside this case, the shredder is protected by foam padding and an airtight and watertight seal to prevent corrosion.

20434 DXC Deployment Shredder



- Shred Size: 1mm x 4.7mm - Type II (Level 6)
- Feed Width: 240mm (9½")
- Sheet Capacity: 4 / 6
- Speed: 4 m/min (13 ft/min)
- Motor: 375 Watts (½ hp)
- Dimensions, mm: 457 H x 406 W x 356 D
- Dimensions, inches: 18 H x 16 W x 14 D
- Solid Steel cutting head
- Hard lockable case is lined, airtight, watertight, and corrosion proof

DAHLE Professional Type II

Dahle Type II paper shredders are approved for the secure destruction of Secret, Top Secret and Protected C information written on paper or other text based media. Proficiency best describes Dahle shredders with their ability to get the job done quickly and easily with minimal effort. Dahle is the best line of defense in preventing unauthorized access and to destroy confidential information.

40330 Small Office Shredder



- Shred Size: 0.8mm x 12mm (½" x 7/16") - Type II
- Feed Width: 260mm (10 ¼")
- Sheet Capacity: 6/8
- Motor: 648 Watts (.87hp)
- Waste Volume: 92 L / 23 Gallons
- Dimensions, mm: 864 H x 540 W x 432 D
- Dimensions, inches: 34¼ H x 21½ W x 17½ D
- SmartPower Management
- Integrated Auto Oiler

40430 Office Shredder



- Shred Size: 0.8mm x 12mm (½" x 7/16") - Type II
- Feed Width: 260mm (10 ¼")
- Sheet Capacity: 9/11
- Motor: 900 Watts (1.2hp)
- Waste Volume: 120 L / 30 Gallons
- Dimensions, mm: 914 H x 533 W x 432 D
- Dimensions, inches: 36¾ H x 21½ W x 17½ D
- SmartPower Management
- Integrated Auto Oiler

40530 Small Department Shredder



- Shred Size: 0.8mm x 12mm (½" x 7/16") - Type II
- Feed Width: 310mm (12")
- Sheet Capacity: 10/12
- Motor: 900 Watts (1.2hp)
- Waste Volume: 152 L / 38 Gallons
- Dimensions, mm: 876 H x 737 W x 508 D
- Dimensions, inches: 34½ H x 29 W x 20 D
- SmartPower Management
- Integrated Auto Oiler

40630 Department Shredder



- Shred Size: 0.8mm x 12mm (½" x 7/16") - Type II
- Feed Width: 405mm (16")
- Sheet Capacity: 11/13 Sheet Capacity
- Motor: 1640 Watts (2.2hp)
- Waste Volume: 180 L / 45 Gallons
- Dimensions, mm: 965 H x 737 W x 508 D
- Dimensions, inches: 38 H x 29 W x 20 D
- SmartPower Management
- Integrated Auto Oiler



DAHLE MHP Oil Free Type IIIB

Dahle Oil-Free MHP Shredders are not only convenient to use and economical to maintain, but also easier on the environment. No oil is required for powerful, jam resistant shredding. Plus, MHP features Smart Power automatic shut down and a lifetime warranty on the cylinders.

Oil free shredding is made possible by the hybrid Matrix High Performance (MHP) cutting cylinders. Aggressive cutting edges are fused to a solid steel shaft, creating an incredibly strong bond, and providing superior shredding capabilities. The cylinders' Trident Grip design produces three continuous points of contact with the paper, pulling it straight through. This smooth, even pull prevents the paper from becoming wedged to either side, providing unprecedented jam protection.

50464 Oil Free Small Department Shredder



- Shred Size: 4mm x 38mm (3/16" x 1 1/2")
- Feed Width: 305mm (12")
- Sheet Capacity: 24 / 26
- Speed: 6 m/min (20 ft/min)
- Motor: 900 Watts (1.2hp)
- Dimensions, mm: 457 H x 533 W x 940 D
- Dimensions, inches: 18 H x 21 W x 37 D
- Oil Free / Maintenance Free
- Cutting Cylinders guaranteed for life
- Trident Grip Jam Protection
- Smart Power - powers down automatically

DAHLE CleanTEC Type IIIA

Dahle CleanTEC® models include CleanTEC® filtration, Safe Technology, SmartPower Management, and an integrated automatic oiler. Models 41422, 41522 & 41622 are RCMP tested to Top Secret for CD's/DVD's.

41322 Small Office Shredder



- Shred Size: 2mm x 15mm (1/12" x 9/16") - Type IIIA
- Feed Width: 260mm (10 3/4")
- Sheet Capacity: 9/11
- Motor: 648 Watts (.87hp)
- Waste Volume: 92 L / 23 Gallons
- Dimensions, mm: 864 H x 540 W x 432 D
- Dimensions, inches: 34 1/4 H x 21 1/2 W x 17 1/8 D
- Will shred paper clips, staples, and credit cards

41422 Office Shredder



- Shred Size: 2mm x 15mm (1/12" x 9/16") - Type IIIA
- Feed Width: 260mm (10 3/4") Feed Width
- Sheet Capacity: 12/14
- Motor: 900 Watts (1.2hp)
- Waste Volume: 120 L / 30 Gallons
- Dimensions, mm: 914 H x 533 W x 432 D
- Dimensions, inches: 36 3/4 H x 21 1/2 W x 17 1/2 D
- Shred paper clips, staples, credit cards, CD's and DVD's

41522 Small Department Shredder



- Shred Size: 2mm x 15mm (1/12" x 9/16") - Type IIIA
- Feed Width: 310mm (12")
- Sheet Capacity: 11/13
- Motor: 900 Watts (1.2hp)
- Waste Volume: 152 L / 38 Gallons
- Dimensions, mm: 876 H x 737 W x 508 D
- Dimensions, inches: 34 1/2 H x 29 W x 20 D
- Shreds paper clips, staples, credit cards, CD's, & DVD's

41622 Department Shredder



- Shred Size: 2mm x 15mm (1/12" x 9/16") - Type IIIA
- Feed Width: 405mm (16")
- Sheet Capacity: 15/19
- Motor: 1640 Watts (2.2hp)
- Waste Volume: 180 L / 45 Gallons
- Dimensions, mm: 965 H x 737 W x 508 D
- Dimensions, inches: 38 H x 29 W x 20 D
- Shreds paper clips, staples, credit cards, CD's, & DVD's



DAHLE Shredder Accessories

Dahle Shredder Supplies & Accessories are specifically designed for Dahle shredders. By using the following products you are guaranteed to achieve optimal performance and greatly prolong the life of your shredder.

Filters



The DAHLE CleanTEC® is the World's only shredder with a fine dust filtration system. The CleanTEC® filter permanently traps up to 98% of the fine dust, and provides a cleaner, healthier work environment.

Item Number	For CleanTEC® Shredder Models	Quantity
20710	All DAHLE CleanTEC Shredders	1/box

Shred Bags



Specifically designed to fit your Dahle shredder, these 1.5 mil thick shred bags feature gusseted sides to allow for greater volume of waste material.

Item Number	Professional and CleanTEC® Shredder Models	Quantity
20725 (705)	403xx, 413xx, 404xx, 414xx, 504xx	100/box
20726 (706)	405xx, 415xx, 406xx, 416xx	100/box

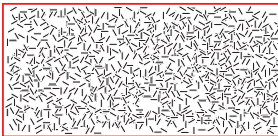
Shredder Oil



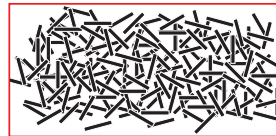
Formulated for Dahle shredders, this oil offers high cling value and low dust retention. Proper oiling guidelines for your Dahle shredder and an MSDS is provided for your convenience.

Item Number	For All Shredder Models	Quantity
20740	All Shredder Models	6 - 355 ml bottles
20741	All Shredder Models	4 - 3.78 L bottles

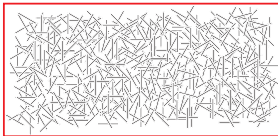
Shred Samples



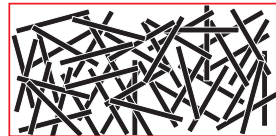
Shred Sample Size - 1mm x 4.7mm
Cross Cut Type II (Level 6)



Shred Sample Size -
2mm x 15mm
(1/12" x 9/16") Cross Cut Type IIIA



Shred Sample Size - 0.8mm x 12mm
(1/32" x 7/16") Cross Cut Type II



Shred Sample Size -
3.9mm x 40mm
(1/8" x 1 9/16") Cross Cut Type IIIB





DAHLE Shredders

Standard Features

- ① **All Steel Frame:** Keeps the cutting cylinders in perfect alignment for optimal performance.
- ② **Solid Cutting Head:** A solid block of German Steel is milled to create each cutting cylinder.
- ③ **Door Open Interlock:** Prevents the shredder from operating with the door open. This safety feature is found on all models.
- ④ **Thermally Protected Motor:** Prevents the motor from overheating during extended use.
- ⑤ **Rubber Shock Mounts:** Provides a barrier between the cutting head and cabinet to isolate noise and reduce vibration.
- ⑥ **Shred Bag:** Features gusseted sides to expand to the shredder's maximum internal capacity.
- ⑦ **Wooden Cabinet w/Swivel Casters:** Attractive cabinet blends in with any decor and the swivel casters allow for easy movability.
- ⑧ **SmartPower Energy Management:** Reduces power consumption when idle, and eliminates power use after 30 minutes of inactivity.
- ⑨ **Chain Driven:** Provides slip-free power to the cutting mechanism for maximum throughput.

**Some components not available on certain models.*

DAHLE CleanTEC®

Special Features

- ⑩ **Dust Filtration:** Eliminates up to 98% of the shredder's fine dust particles and provides a cleaner, healthier work environment.
- ⑪ **Safe Technology:** Verbal and Contact Emergency Shutdown—Simply yell "Stop" or hit the top cover and the shredder immediately stops.
- ⑫ **ESP Protection:** The shredder "knows" how much you're shredding and will not operate if sheet capacity is exceeded.
- ⑬ **EvenFlow Lubricator:** This automatic oiler provides slow, continuous lubrication across the entire cutting mechanism.

